

# Dredging Project History

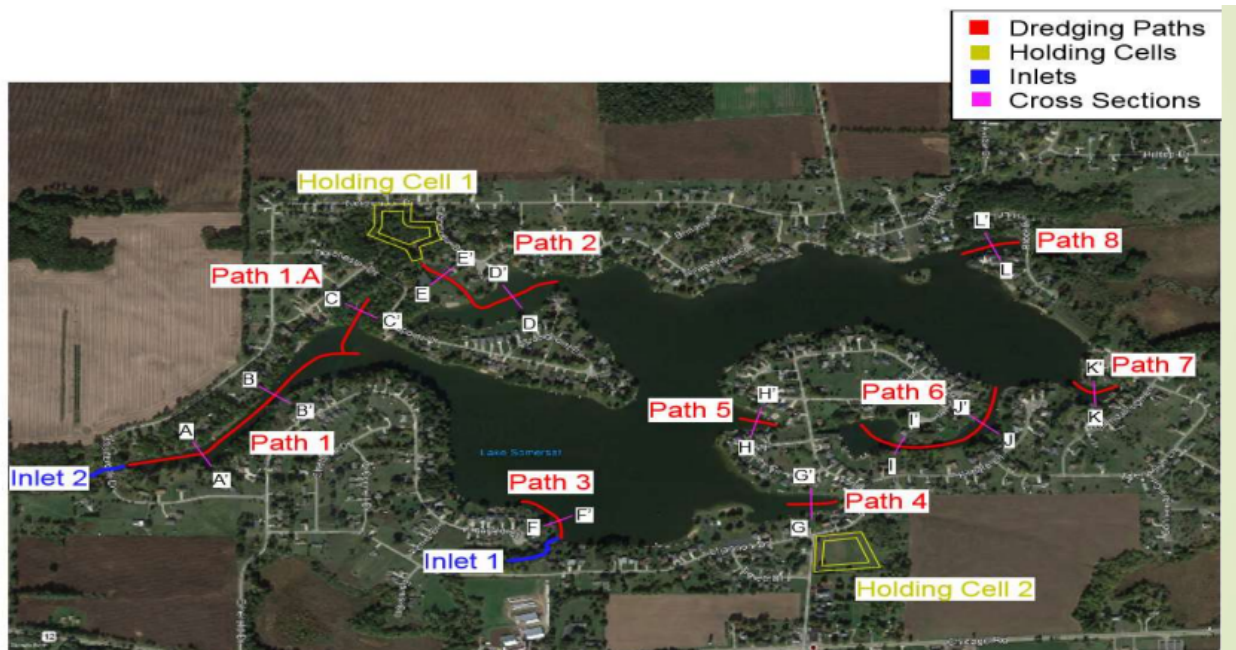
## Background

The first mention of the need to consider dredging Lake Somerset was during the 20??, Annual Meeting. The proposed project was presented as a means for controlling sediment accumulation in the main inlet and various bays where the depth of the waterways was obviously filling. These locations included the mainstream feed from the west by Goose Creek, the south stream coming from the retention pond north of the dairy farm and the discharges at the east end of the lake.

After much research and discussion, a committee was formed to determine the costs, the potential vendors and the Michigan Department of Natural Resources. All that work and continued discussion with our residents determined the potential costs, how the project might be completed and the funds necessary to be procured. The membership did approve an annual assessment of \$65/lot to be held in escrow to pay of the project. The assessments started in 2019. The total costs were \$668,575 by the end of the project.

As with all projects of this substantial size, there were issues with vendors, permits and timing. Eventually a vendor was secured, and all permits procured. The project consisted of dredging machines vacuuming the sediment from the bottom with large pumps. The pumps conveyed the materials through large pipes to the sediment ponds where the materials were deposited. The excess water filled the pits and was allowed to seep back to the lake from the ponds. The lake bottom is not flat so debris (trees, stumps, etc.) were left in place. Minimal boat traffic disturbance was attempted during this nearly 9-month process. Regular updates were published to the membership as the project proceeded through the spring, summer, and fall.

The dredging project consisted of 8 main “paths” as noted on the map below:



Two locations were determined to deposit the dredging material. One at the corner lot across from the lake where the Congregational Church is located at the corner of Shannon and Somerset Road. The second was in a vacant depression where several lots were located along Northmoor Ave.



As can be seen by the Google Map above the sludge pits were present at the time of the satellite photo.

A closer look illustrates the size of the pits in closer detail. Below is the Northmoor pit site.



Below is the Congregational Church depositing site.







Lake Somerset  
Path 5 Dredge



Path 6  
8/9/2020

