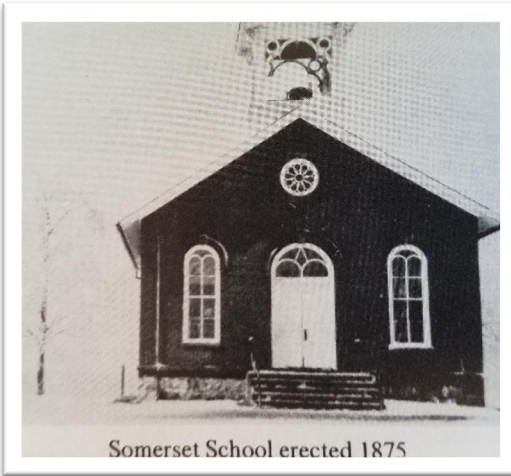


Lake Somerset Property History

Other notable landmarks on Lake Somerset is the school house at 10760 Somerset Lane. This schoolhouse was built in 1875. It was a one room schoolhouse very similar to the construction of the Cherry Hill Winery Schoolhouse 5 miles away on US 12. The schoolhouse has been bought and sold many times over the years but still is identifiable, especially from the rear of the current residence. It was used in the 1960's



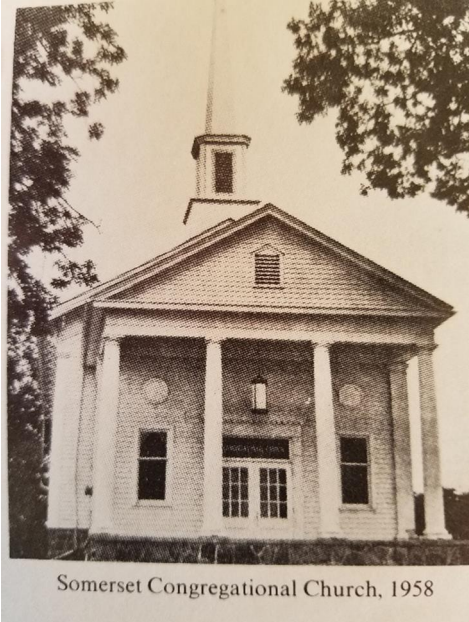
as the sales office for the Area Development Corporation, the company that built the lake. Some of the longtime residents actually attended school in this structure, as the school was active until the mid-1950's.



From the rear of the house, the modern home additions to the school house can be seen on each side of the main structure

The Somerset Congregational Church on Somerset Road is another historic and famous structure. The congregation has been in existence since the founding in 1858. Many of the earliest settlers were prominent citizens of Somerset attended and were officers, attendees and active in the church. Many of their graves can be found in the cemetery behind the church. The church was built with \$1,500 in donations from the parish members, and completed in December 1860.

“The church was built of native white wood, known for its weathering qualities. The wood was cut into lumber at one of the nearby sawmills and the boards were fitted into place by hand.” 4



Source: 150 Year In the Hills and Dales Vol. II -- This is a picture of the church established in 1858 but according to the Church Website the actual church as it is today construction was completed in December 1860